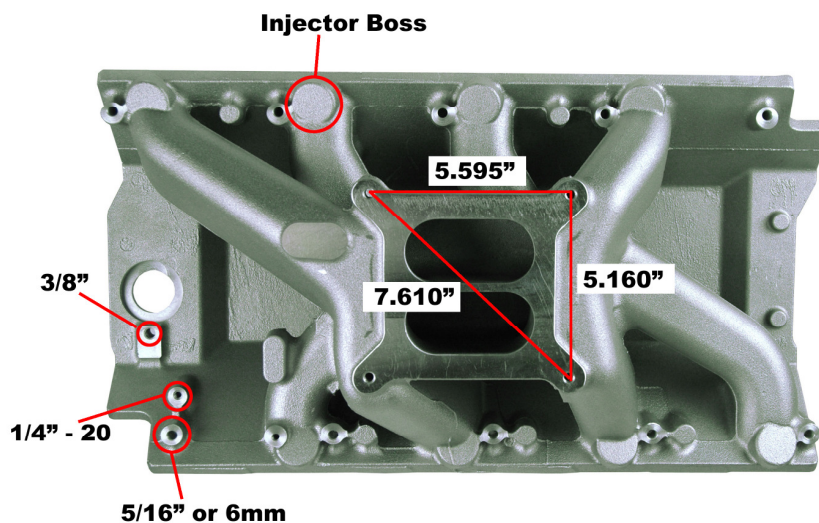
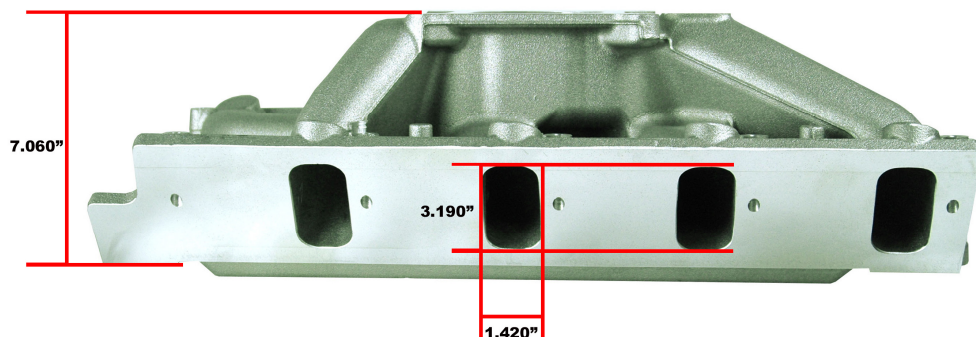


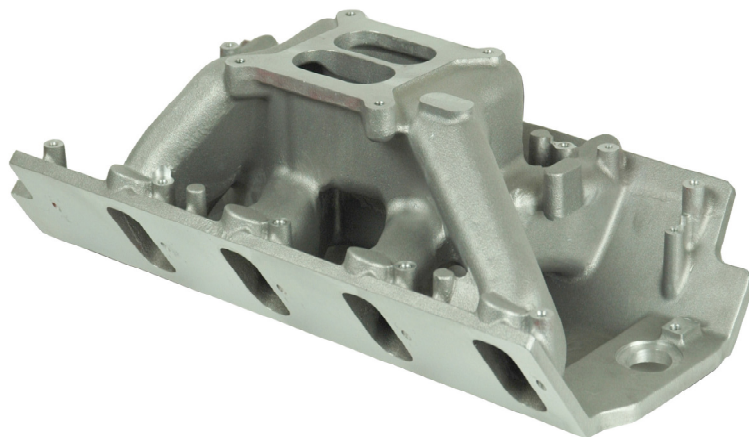


BBC GEN7 8.8L DUAL PLANE MANIFOLD TECH SHEET



Part number:	41616010	.
Material:	319	.
Weight:	21.5 lbs	.
Deck height:	10.232"	.
Carb flange:	4150	.
Top plate:	N/A	.
Height:	7.060"	.
Port Dim:	Semi Oval / Stock 3.190"H x 1.420"W	.
Flange Thickness:	.435"	.
Gasket PN#	65123700	.
Distributor:	Machined for std. deck distributor w/ slip collar	.

Note: Dart manifolds may require additional machining for fitment depending on the deck height of the block, gasket thickness and cylinder head machining.



Dart BBC 8.1L / 8.8L Dual Plane Manifold

PN# 41616010

Specifications:

Material: Cast Aluminum
RPM Range: Off idle – 6,500
Deck Height: Standard
Plenum Height: 6.375"
Carb Flange: 4150"
Port Dimensions: 3.170"H x 1.400"W
Injector provision: Yes (Not machined)
Distributor provision: Yes
Gasket PN# (Felpro) QMS96057

Description:

Dart 8.1L dual plane manifolds are designed for Street, strip and light industrial applications. They feature long intake runners and raised plenum for off idle performance up to 6,500 rpm.